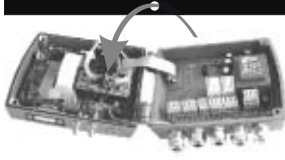


USER MANUAL



SPI board replacement

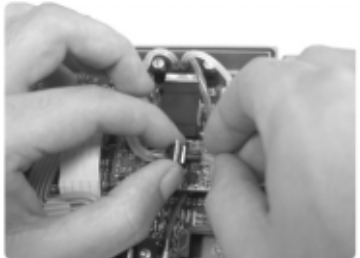


! Before replacing SPI board, the transmitter must be powered off.
Remove and replace SPI board must be carried out with precautions.

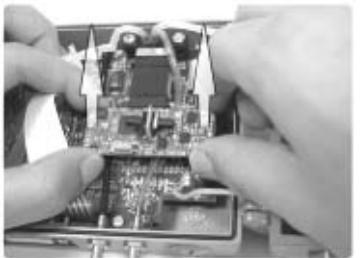
::: SPI Removal :::



1 - Open the transmitter. SPI is located on the left door of the transmitter.

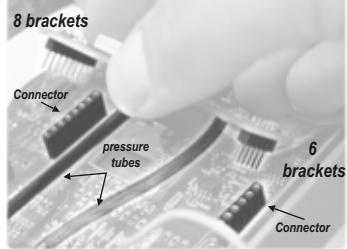


2 - Disconnect the pressure tubes, taking care that central element remains perpendicular to SPI board.

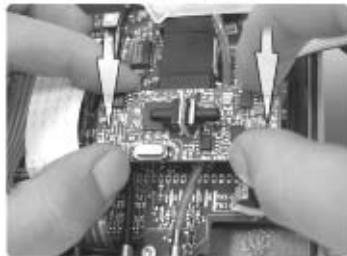


2 - With your thumb and index finger, remove carefully SPI, by pulling it vertically and slowly. However, we recommend to use a special extraction tool dedicated to integrated circuit.

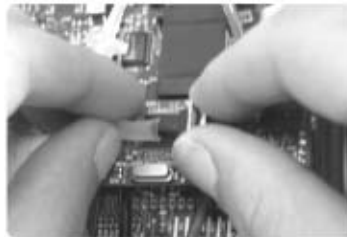
::: SPI mounting :::



1 - Put the 2 input pressure tubes between the 2 SPI connectors.
2 - Put the SPI as shown on the photo, taking care that it's in the correct direction (mistake-proofing mark).



3 - Check that the 2 input pressure tubes are located under the SPI.
4 - Adjust the SPI pins to the connectors. Do not force. Once SPI board is properly connected, press on each side to get a firm connection.



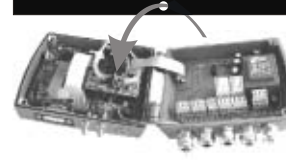
5 - Connect the pressure tubes taking care that the element remains perpendicular to SPI.
6 - Check that SPI tubes are properly connected to the electro-valve.
7 - Switch on the transmitter and check that it works properly.

We recommend you to test the analogue outputs to be sure that the transmitter works properly.

NOTE SPI board is badly connected if:

- On a model without display: analogue outputs have a value inferior to 3mA (for an output in current) or 0V (for an output in voltage)
- On a model with display: the transmitter displays "ERREUR 03"

USER MANUAL



SPI board replacement

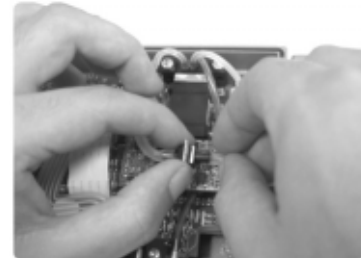


! Before replacing SPI board, the transmitter must be powered off.
Remove and replace SPI board must be carried out with precautions.

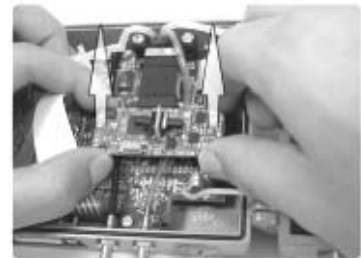
::: SPI Removal :::



1 - Open the transmitter. SPI is located on the left door of the transmitter.

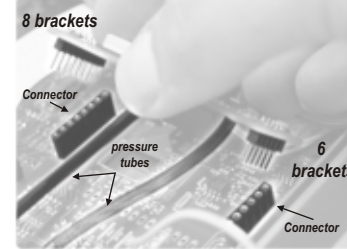


2 - Disconnect the pressure tubes, taking care that central element remains perpendicular to SPI board.

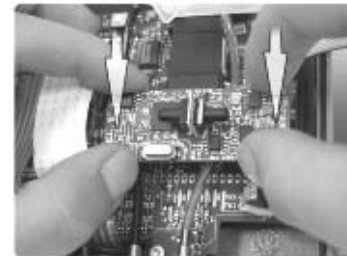


2 - With your thumb and index finger, remove carefully SPI, by pulling it vertically and slowly. However, we recommend to use a special extraction tool dedicated to integrated circuit.

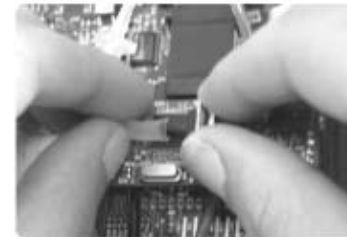
::: SPI mounting :::



1 - Put the 2 input pressure tubes between the 2 SPI connectors.
2 - Put the SPI as shown on the photo, taking care that it's in the correct direction (mistake-proofing mark).



3 - Check that the 2 input pressure tubes are located under the SPI.
4 - Adjust the SPI pins to the connectors. Do not force. Once SPI board is properly connected, press on each side to get a firm connection.



5 - Connect the pressure tubes taking care that the element remains perpendicular to SPI.
6 - Check that SPI tubes are properly connected to the electro-valve.
7 - Switch on the transmitter and check that it works properly.

We recommend you to test the analogue outputs to be sure that the transmitter works properly.

NOTE SPI board is badly connected if:

- On a model without display: analogue outputs have a value inferior to 3mA (for an output in current) or 0V (for an output in voltage)
- On a model with display: the transmitter displays "ERREUR 03"